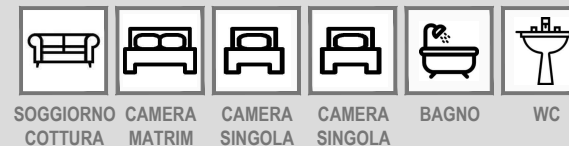


# PIANO RIALZATO



## PIANO RIALZATO

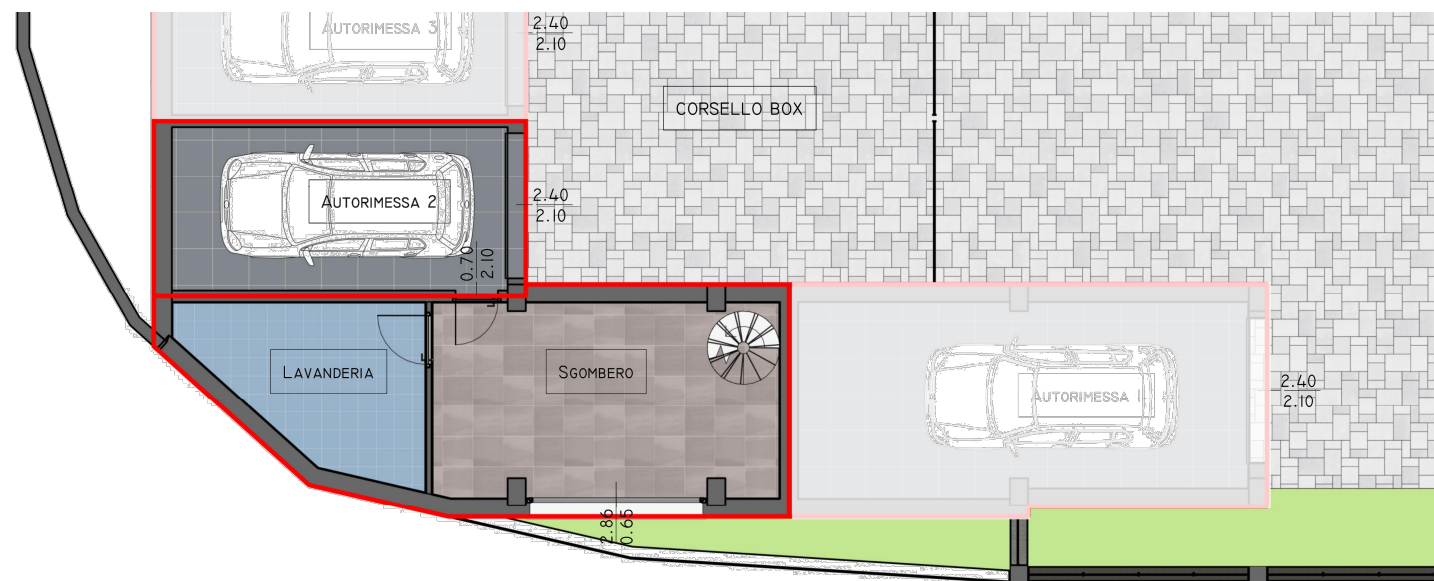
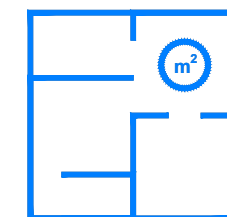
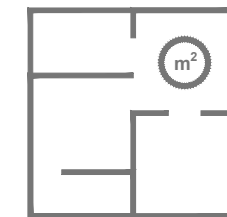


**QUADRILOCALE 133,85 mq**  
SUPERFICIE COMMERCIALE

## PIANO SEMINTERRATO

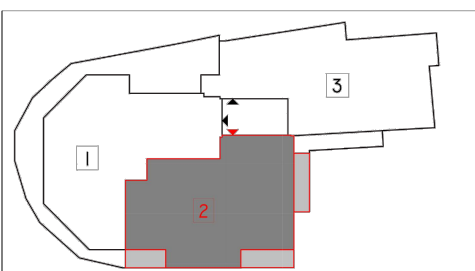


**BOX 17,85 mq**  
SUPERFICIE COMMERCIALE



# PIANO SEMINTERRATO

VIA BAGGIOLI

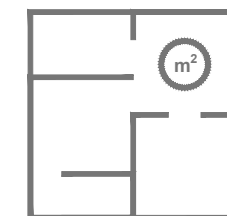


### SUPERFICI EFFETTIVE

SUP. APPARTAMENTO.....	99,30 mq
SUP. ACCESSORIE.....	34,20 mq
SUP. BALCONI.....	14,35 mq
SUP. TERRAZZO.....	mq
<b>TOTALE .....</b>	<b>147,85 mq</b>

### SUPERFICI COMMERCIALI

.....	[100,00 %]
.....	[80,00 %]
.....	[50,00 %]
.....	[40,00 %]
<b>SUP. COMM.....</b>	<b>133,85 mq</b>
<b>SUP. BOX.....</b>	<b>17,85 mq</b>



# NUOVO COMPLESSO RESIDENZIALE

VIA BAGGIOLI 8, PESCATO (LC)

